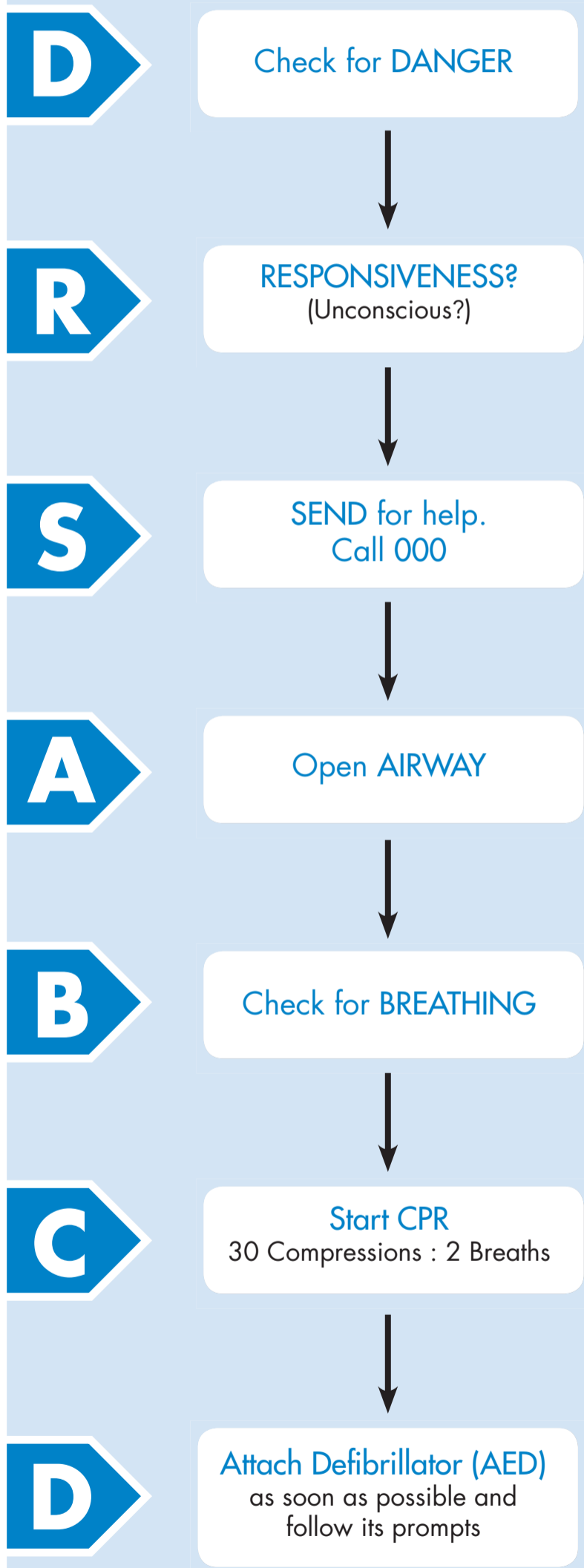


# Basic Life Support



## FLOW CHART

## ZOLL® AED PLUS® WITH REAL CPR HELP®



"Check RESPONSIVENESS"

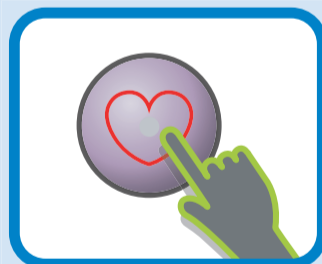


"CALL for HELP"

"OPEN AIRWAY"



"Attach Defib pads to patient's bare chest"



"Don't touch patient, ANALYSING"

If SHOCK advised "PRESS FLASHING SHOCK BUTTON"



If no SHOCK advised and after SHOCK delivered "START CPR"

Cycles of 30 compressions and 2 breaths should be delivered until the AED advises you to STOP or until Professional help arrives or victim starts to move

www.zoll.co.nz • 0508 965 563  
www.zoll.com.au • 1800 605 555